

WESTERLY

A	SF, <u>19</u>, <u>16</u>, <u>9</u>	Δ	4.2nm
B	SF, No1, 3, <u>17</u>, <u>9</u>	∞	2.6nm
C	SF, <u>No1</u>, <u>17</u>, <u>9</u>	Δ	2.1nm
D	SF, 10, 3, <u>11</u>, <u>9</u>	∞	1.6nm
E	SF, <u>10</u>, <u>12</u>, <u>9</u>	Δ	1.2nm

EASTERLY

1	SF, 6, 15, 16, No1, 9		3.1nm
2	SF, <u>6</u>, <u>7</u>, 10, 3, 9	∞	2.5nm
3	SF, 15, 16, 9	Δ	2.4nm
4	SF, <u>12</u>, <u>7</u>, 11, 9	∞	1.4nm
5	SF, 6, 12, 9	Δ	1.2nm

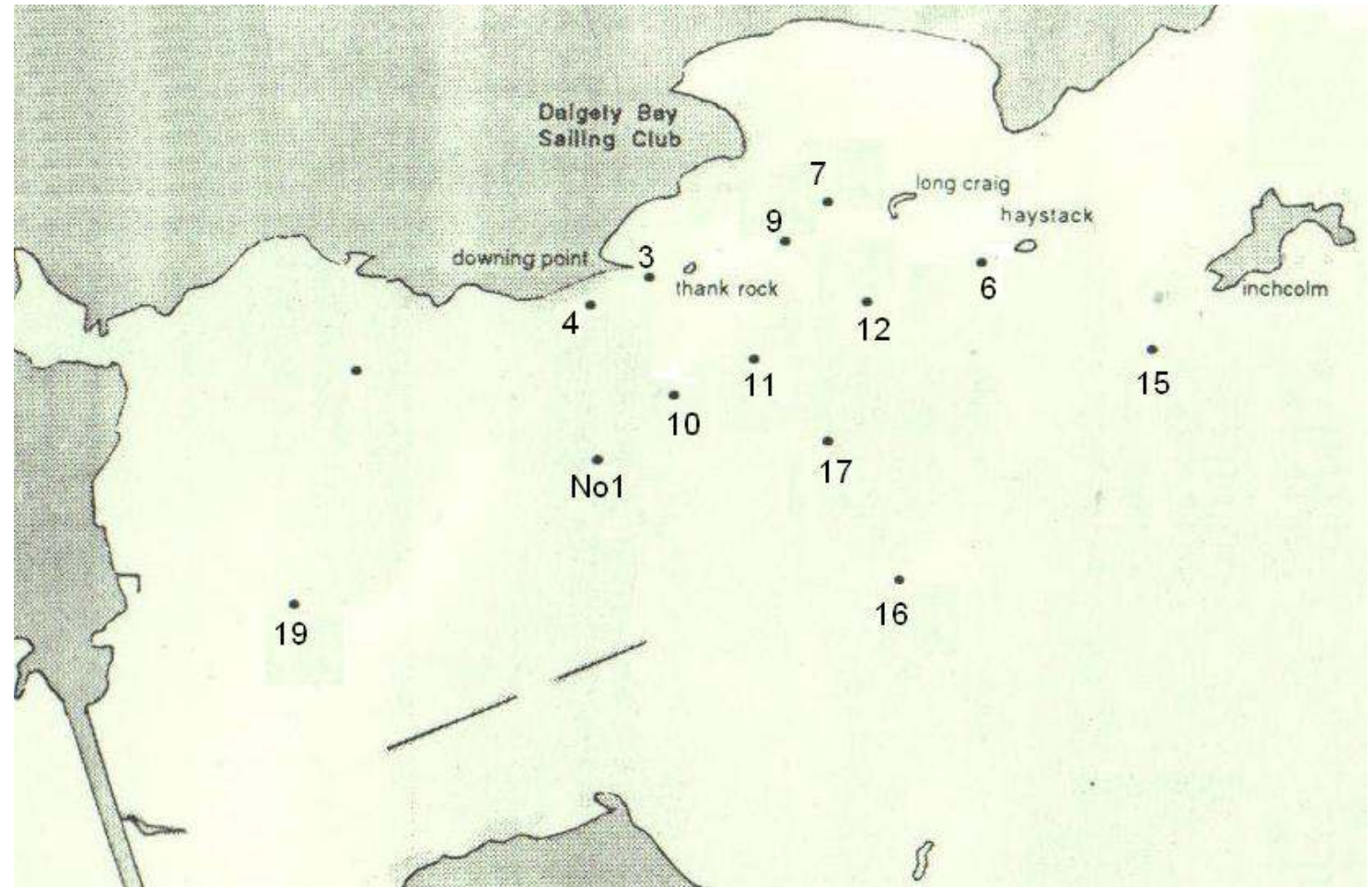
Notes

Δ = triangle course

∞ = figure of eight course

Marks taken to PORT shown above as underlined.

Start line is always an onshore transit, within outer distance mark 9 (no inner distance mark). Race Office to set transit pole location, based on wind and tide effect on outer distance mark. An alternative outer distance mark may be laid at Race Officer discretion - in such circumstances mark 9 will still be in use as per above.



WESTERLY

- A SF, 19, 16, 9 Δ 4.2nm**
- B SF, No1, 3, 17, 9 ∞ 2.6nm**
- C SF, No1, 17, 9 Δ 2.1nm**
- D SF, 10, 3, 11, 9 ∞ 1.6nm**
- E SF, 10, 12, 9 Δ 1.2nm**

EASTERLY

- 1 SF, 6, 15, 16, No1, 9 3.1nm**
- 2 SF, 6, 7, 10, 3, 9 ∞ 2.5nm**
- 3 SF, 15, 16, 9 Δ 2.4nm**
- 4 SF, 12, 7, 11, 9 ∞ 1.4nm**
- 5 SF, 6, 12, 9 Δ 1.2nm**

Notes

Δ = triangle course

∞ = figure of eight course

Marks taken to PORT shown above as underlined.

Start line is always an onshore transit, within outer distance mark 9 (no inner distance mark). Race Office to set transit pole location, based on wind and tide effect on outer distance mark. An alternative outer distance mark may be laid at Race Officer discretion - in such circumstances mark 9 will still be in use as per above.

WA



WD



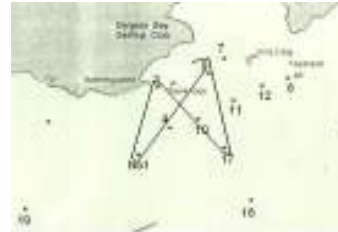
E1



E4



WB



WE



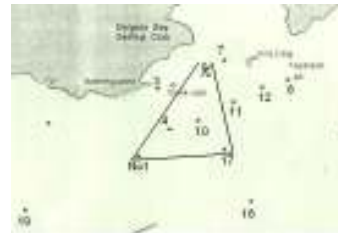
E2



E5



WC



E3

